

# MAXit

The **MAXit Checker** is a grammar and style checker that connects to the **PTC Arbortext Editor**. The **MAXit Checker** uses 9,500+ rules, custom dictionaries and *artificial intelligence* software to check **Technical English** for grammar, syntax, style and simplicity.

## The MAXit Checker for Arbortext Editor 5.x

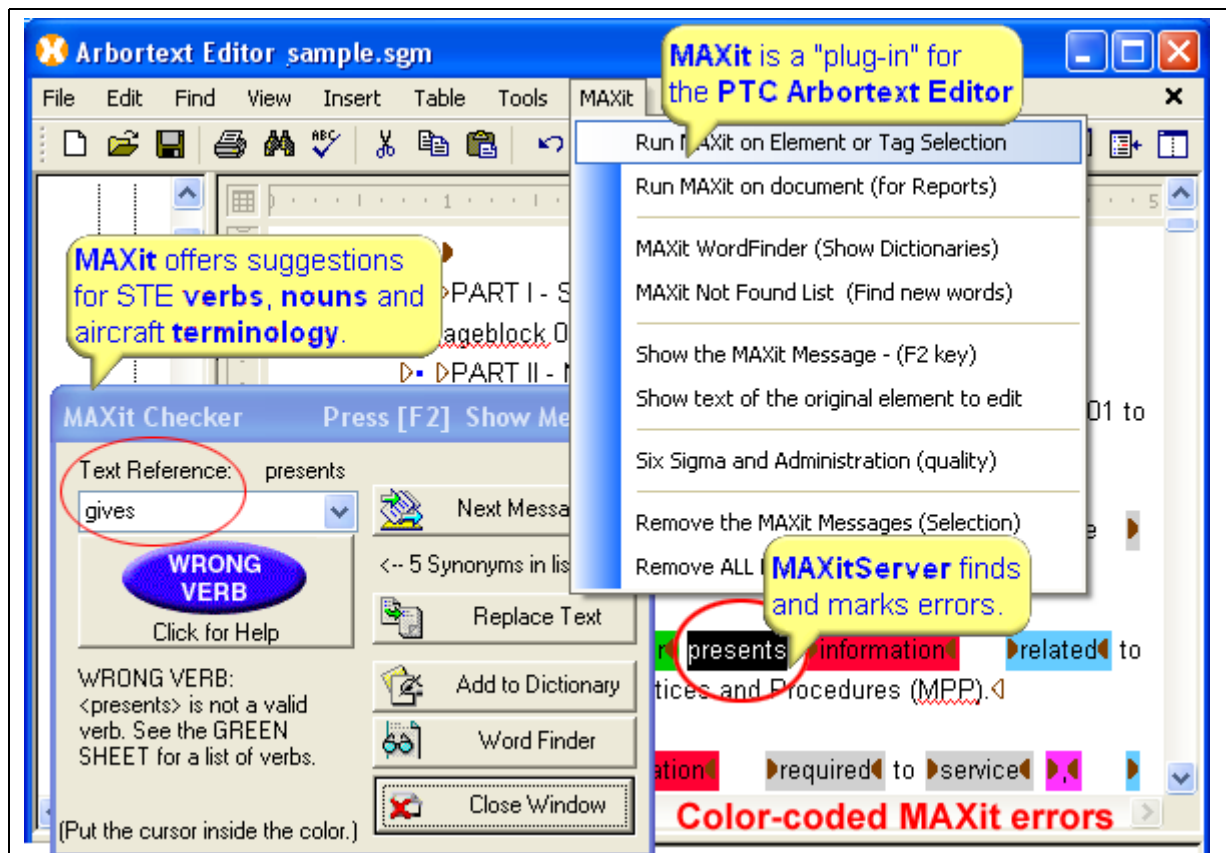
- Uses a **pop-up dialog box** to allow easy editing within the editor.
- Checks either **Controlled English** or **ASD Simplified English**.
- Uses **custom dictionaries** to check for special terminology.
- Skips **graphics** and any tags defined by the user.
- Critiques a complete document, **text selection** or one element.
- Links to **Content Management Systems** for text reuse.
- Creates text quality metrics for **six sigma** validation.
- Prepares texts for **language translation**. (SMART Translator)
- Increases the **text readability** and enforces corporate style rules.
- Links the Arbortext Editor to the **MAXitServer** by TCP/IP sockets.
- Functions in all versions of **Arbortext Editor** from 5.x.
- Navigates, but does not change the HTML, **SGML** or **XML** tags.
- Allows for **collaborative editing** through the **MAXitServer**.
- Runs as a **Windows** or a **Unix (SUN Solaris)** RPC.
- Creates log files for **Not Found** words and dictionary expansion.
- Has a **Word Finder** tool to search for words in the dictionaries.
- Supports dialog boxes for both **Windows** and **Motif** (Unix).
- Uses full-sentence **grammatical** analysis with *artificial intelligence*.

## How the MAXit Checker works with Arbortext Editor

The author selects the **MAXit** item on the top menu, as shown below. The choices are *check the document*, *text selection* or *one element*. The selected text is sent instantly to the **MAXitServer** for Windows or Unix.

The **MAXit Checker** uses full-sentence grammar and syntax analysis for vocabulary, comprehension, translatability, accuracy, simplicity and usability. The **MAXit Checker** uses *artificial intelligence* and 9,500+ grammar rules developed from 18 years of linguistic research. The **MAXit Checker** helps authors to write either **Controlled English** texts or aircraft manuals that must comply with **ASD Simplified Technical English**. **MAXit** complies to standards for S1000D, ATA2200 and NATO.

The **MAXit Checker** allows the writer to make corrections based on computer-aided suggestions, synonyms, examples and grammatical explanations. An **On-line Help** system explains the **40 MAXit** messages with examples.



**SMART**  
COMMUNICATIONS, INC.

115 East 57th St., 11th Floor, New York, NY 10022 USA  
Tel: +1(212) 486-1894 Fax: +1(212) 826-9775

[www.smartny.com](http://www.smartny.com)  
email: [info@smartny.com](mailto:info@smartny.com)