



The **MAXit Checker** is an interactive text critique tool that links to **FrameMaker**. **MAXit** uses *artificial intelligence* techniques and 8,500+ rules of English grammar, syntax and style to analyze text.

#### Highlights of the MAXit for FrameMaker

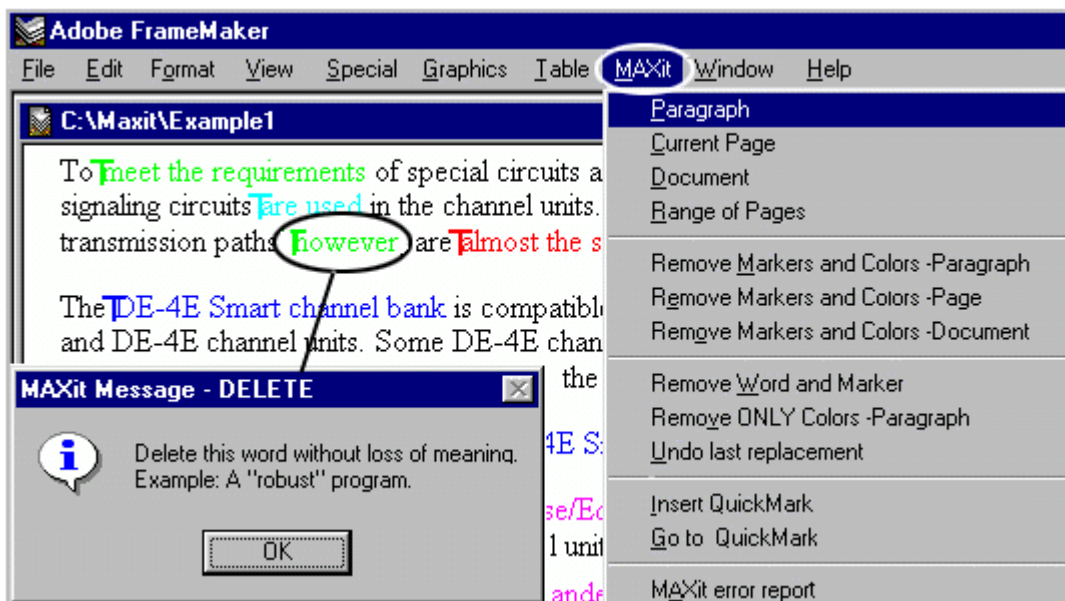
- **MAXit** is a "plug-in" for easy editing within FrameMaker6.0 and FrameMaker7.0. (Includes SGML/XML versions).
- **MAXit** creates 40 color-coded messages.
- **MAXit** uses custom dictionaries for product nomenclature.
- **MAXit** critique is fast, one page per second.
- **MAXit** reports quality metrics for QA/QC (six sigma).
- **MAXit** allows for global collaborative editing and writing.
- **MAXit** is the ideal tool to prepare English texts for manual or computer-aided language translation.
- **MAXit** complies to AECMA, ATA and NATO standards.
- **MAXit** increases readability and decreases support costs.

#### How the MAXit checker works . . .

The writer or author selects the text for the critique. **MAXit** then *parses* the text and compares the results to the grammar rules and dictionaries.

The errors are presented in 40 **MAXit** messages and highlighted with color codes.

The writer or author edits and corrects the text from the displayed corrections, suggestions and explanations.



**Controlled English (CE)** is a 2,500 "basic" technical vocabulary, to which product terminology is added. **Controlled English** manuals are clear, concise, consistent and ideal for global documentation.

#### AECMA Simplified English (SE)

is a controlled language designed to write aerospace and aircraft component maintenance manuals.



The **SMART Text Miner** is a



sophisticated software tool that extracts knowledge and terminology from texts to create the custom vocabularies and taxonomies.

#### How to learn Controlled English . . .

**SMART** offers two and three day **Writers' Workshops**. These workshops teach the techniques to write in **Controlled English** or **AECMA Simplified English** with the **MAXit Checker**



909 Third Ave, 5th Floor, New York, NY 10022 USA  
Tel: (212) 486-1894 Fax: (212) 826-9775 info@smartny.com

**MAXit** is also available for Microsoft WORD 2000, Lotus NOTES/WebSphere, Arbortext Epic 4.x, XMLSpy and Corel XMetaL 2.0.