



The **MAXit Checker** is a grammar and style checker for **PTC Arbortext Editor®**. The **MAXit Checker** uses custom aerospace dictionaries and 9,500+ rules to check and correct texts for grammar, syntax, style and simplicity.

Features of MAXit for Arbortext Editor 5.x

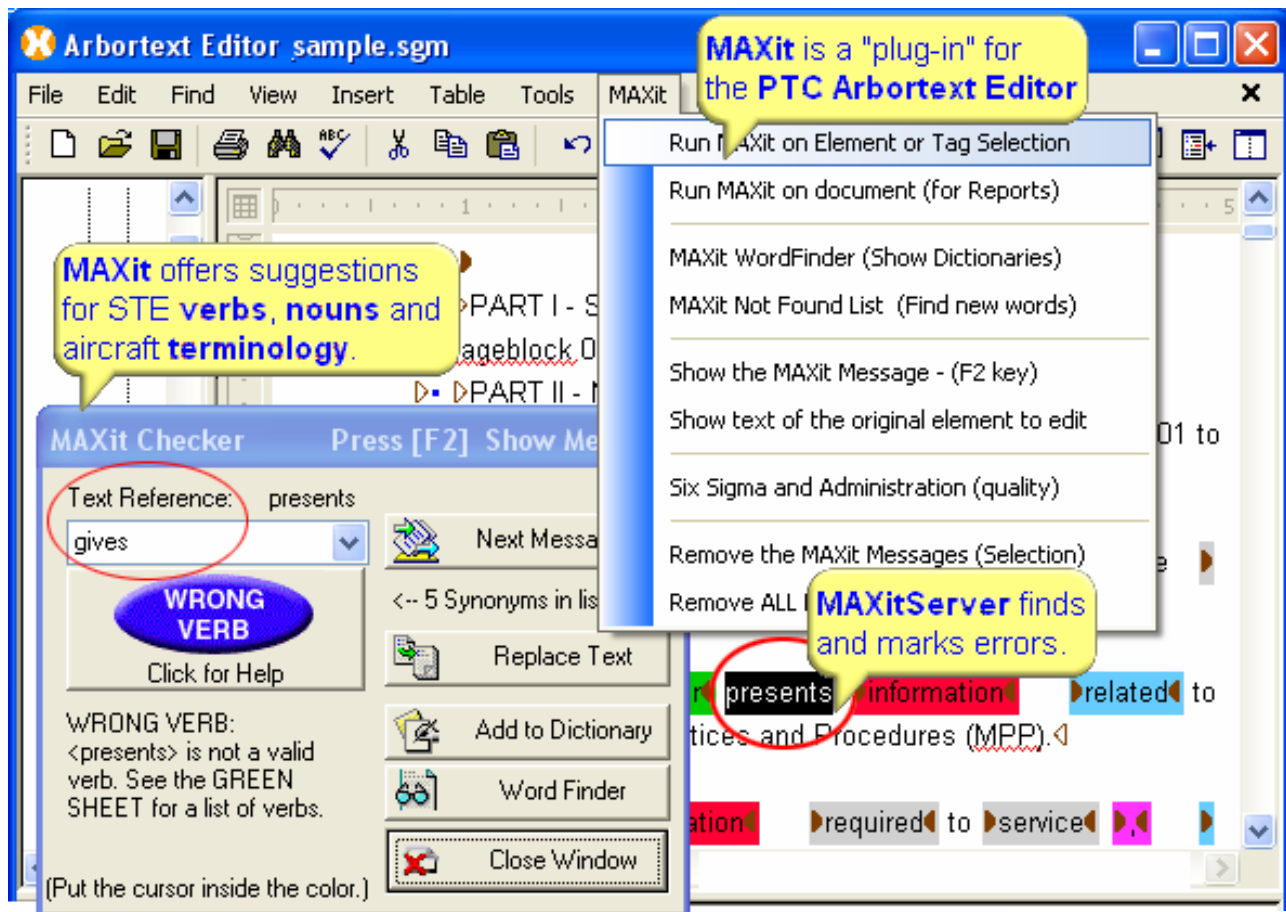
- Lets writers check text, tables and full documents.
- Check for compliance to ASD-STE100 standards.
- Skips graphics and tags identified by the writer.
- Navigates, but does not change XML or SGML.
- Makes an interactive text critique in seconds.
- Creates a log file to gather new words.
- Creates reports for readability and text quality.
- Includes a Word Finder tool to search dictionaries.
- Prepares English text for language translation.
- Includes dialog boxes with on-line help.
- Runs on Microsoft Windows and SUN Unix.
- Allows checks by text selection or document.
- Includes a text reference window for editing.
- Includes the **MAXitServer** for enterprise use.

How the MAXit Checker Works with Arbortext Editor

The writer uses the **MAXit** menu in the **Arbortext Editor** to select either a block of text or a document. The text is sent to the **MAXit Checker** for analysis that includes grammar, style, syntax, vocabulary, comprehension, accuracy, simplicity, compliance and usability.

The **MAXit Checker** uses artificial intelligence and 9,500+ grammar rules to check for compliance to ASD Simplified Technical English. This specification is required by S1000D, ATA2200, ICAO, Airbus, Boeing, Bombardier, Embraer, Liebherr and many airlines.

The writer edits the texts based on computer-aided suggestions, corrections and extensive on-line help.



司马通讯公司
SMART
COMMUNICATIONS, INC.

909 Third Avenue
New York, NY 10022, USA
Tel: +1(212) 486-1894
Fax: +1(212) 826-9775
email: info@smartny.com
www.smartny.com



eZenStar Localization Partners
Section 3, Nan Yuan Beili
Fengtai District
Beijing 100076 P.R. China
Tel: +86-10 647733488
email: info@ezenstar.com

MAXit

MAXit Checker 是用于 **PTC Arbortext Editor®** 的语法和文体检查器。**MAXit Checker** 使用自定义航空词典和 9,500 多条规则检查并纠正文本的语法、句法、文体和简明性。

Arbortext Editor 5.x 用 MAXit 的功能

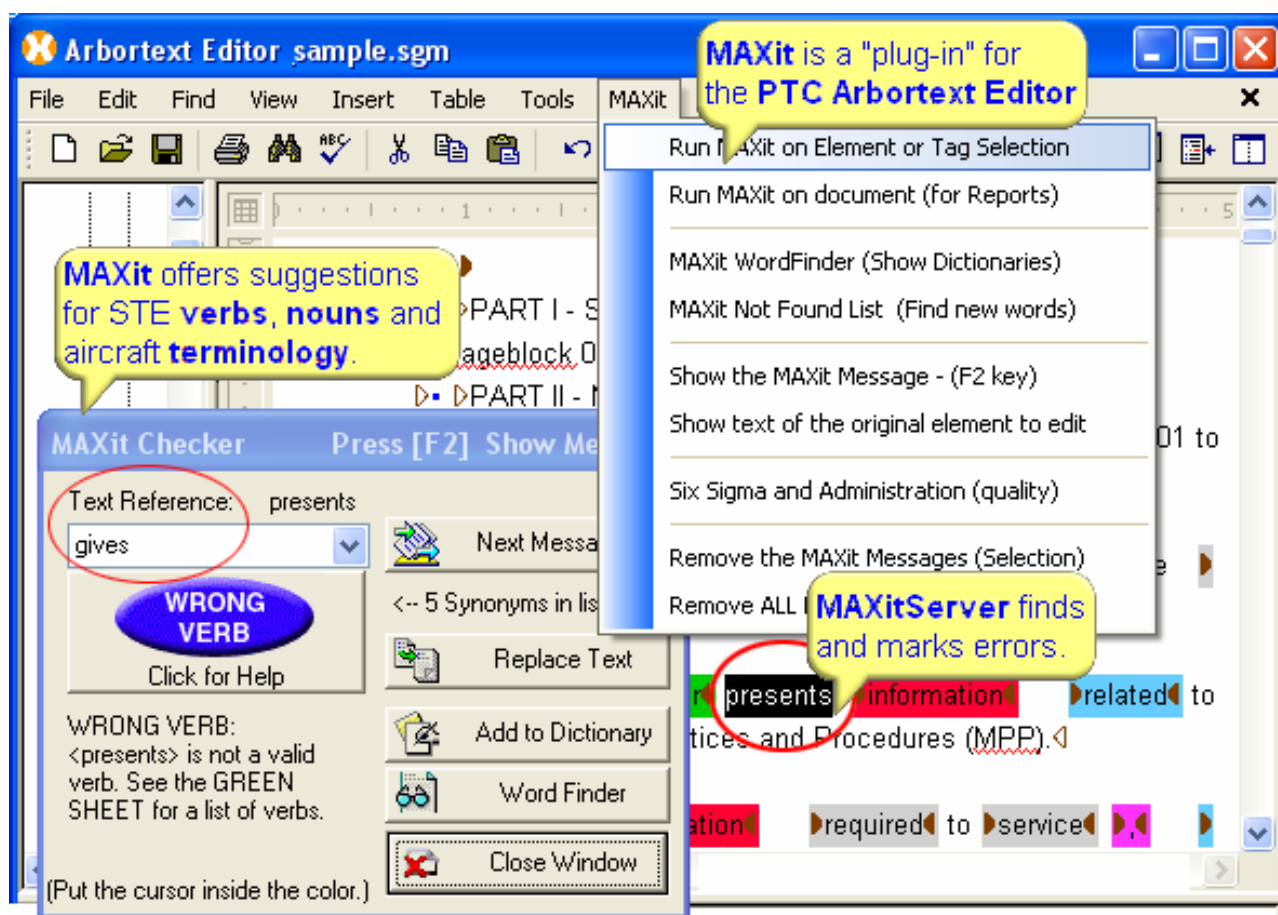
- 让作者检查文本、表格和整个文档。
- 检查是否符合 ASD-STE100 标准。
- 跳过作者指定的图形和标记。
- 进行导航，但不改变 XML 或 SGML。
- 很短时间内进行交互式文本评判。
- 创建日志文件，以收集新字词。
- 创建可读性和文本质量报告。
- 包含搜索词典的“Word Finder”工具。
- 为语言翻译准备英语文本。
- 包含提供在线帮助的对话框。
- 可在 Microsoft Windows 和 SUN Unix 上运行。
- 允许按选择文本或文档进行检查。
- 包含编辑用文本参考窗口。
- 包含企业用 **MAXitServer**。

MAXit Checker 如何与 Arbortext Editor 结合使用

作者可使用 **Arbortext Editor** 中的 **MAXit** 菜单选择一段文本或一个文档。文本会发至 **MAXit Checker** 进行分析，包括语法、文体、句法、词汇、含义、准确性、简明性、可用性以及是否符合标准。

MAXit Checker 使用人工智能和 9,500 多条语法规则检查文本是否符合 ASD Simplified Technical English。此规范为 S1000D、ATA2200、ICAO、Airbus、Boeing、Bombardier、Embraer、Liebherr 及许多航空公司所要求。

作者基于计算机辅助建议、纠正和广泛的在线帮助编辑文本。



司马通讯公司
SMART
COMMUNICATIONS, INC.

909 Third Avenue
New York, NY 10022, USA
Tel: +1(212) 486-1894
Fax: +1(212) 826-9775
email: info@smartny.com
www.smartny.com

 西思达
eZenStar

eZenStar Localization Partners
Section 3, Nan Yuan Belli
Fengtai District
Beijing 100076 P.R. China
Tel: +86-10 647733488
email: info@ezenstar.com