



The **MAXit Checker** uses custom dictionaries and 17,000 Artificial Intelligence (AI) rules for simplification. **MAXit** understands the difference between a *pilot fish*, *pilot-operated relief valve* and an *airline pilot*. An intelligent *grammar engine* uses **structured prediction algorithms** to suggest replacement words and phrases. The use of Simplified English is ideal for mission-critical technical instructions to prevent risks and costly human errors.

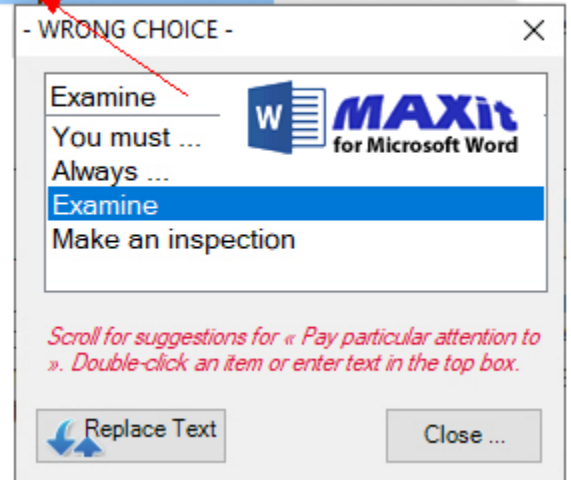
The original text is shown below. The messages are highlighted in colors that the user can right-click to get advice. For example, **RED** indicates a long sentence, **BLUE** a vague phrase, **GREEN** an abbreviation to avoid. The original meaning is retained and the simplified text is easier to read and translate.

Deblade the LPT1 and LPT2 rotor assemblies and remove the blade retainers in accordance with the Engine Maintenance Manual 302J. Be sure to chart location of all turbine blades to rotor disc (i.e., using numbers, etc.).

Perform a fluorescent penetrant inspection on all LPT1 and LPT2 rotor assembly turbine blades that have operating time in accordance with Method Number 302A.

Pay particular attention to the fir tree area and 0.50 inch below the turbine blade shroud. Cracks are not acceptable.

Pay particular attention to the fir tree area



MAXit Checker is available for Word, Adobe FrameMaker, PTC Arbortext Editor and other technical publishing platforms. Custom dictionaries are developed by the SMART Text Miner and managed by a SMART Lexicon Manager.

The original text, rewritten into Simplified English with the help of the **MAXit Checker**, is shown below.

Read the instructions in the Engine Maintenance Manual 302J. Remove the turbine blades and blade retainers from the LPT1 and LPT2 rotor assemblies. Make a chart that uses numbers to record the location of each turbine blade to rotor disc.

Do a fluorescent penetrant inspection on all turbine blades in the LPT1 and LPT2 rotor assemblies. Refer to Method Number 302A for the hours of turbine operation. Examine the area for cracks around the fir tree and 0.50 inch (13 mm) below the shroud for the turbine blades.



The **MAXit Starter Kit** is ideal for proof of concept.

The Starter Kit includes these items:

- One full license of MAXit for Word or MAXit for FrameMaker
- Set of three starter dictionaries for one domain, for example, automotive, aerospace, medical, public service
- 60-minute, on-line introduction to the art of simplification

Request costs and more information at maxit@smartny.com.



How to Contact us:

Smart Communications, Inc.

641 Lexington Ave., 13th Floor,
New York, NY 10022 USA
Tel: +1(212) 486-1894
info@smartny.com
www.smartny.com
www.smartny.mobi (Mobile)