



SMART Communications, Inc., New York City, is an Artificial Intelligence (AI) boutique and developer of the **MAXit Checker** software. The SMART team has 20+ years of experience in digital publishing and compliance to ASD-STE100 Simplified Technical English, Controlled English and Plain English.

This AI tool is designed to help technical writers create clear, concise texts written in either **Simplified Technical English, Controlled English or Plain English**. The SMART team provides dictionaries for each of these controlled languages.



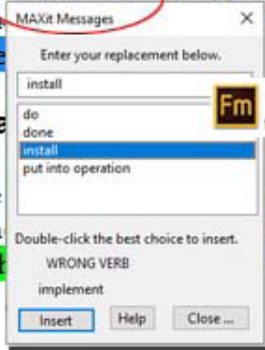
All versions of the **MAXit Checker** use more than 19,000 Artificial Intelligence (AI) rules for grammar, syntax and style. The program helps

technical writers **simplify** complex information through a set of curated controlled dictionaries.

Each version of **MAXit** has a different interface, but the same dialog box to show corrections or suggestions. Shown below is the dialog box in Adobe FrameMaker. The user left-clicks on a color to see the corrections or suggestions.

4 Bypass Capacitor for VCC

Since GNSS module (GT-90/GT-9001/GT-100) internally not required to implement any bypass capacitor on the ripple noise on that ± 50 mV, the be placed close



5 Mechanical

Depend on the stress due to the torque. The module on user's PCB is given with intended to position

The Results ...

The curated dictionaries create texts that are clear, concise, consistent and *easy to understand*. The benefits include improved *customer satisfaction* and cost savings through prevention of human errors. The **MAXit Checker** has a Six Sigma quality tool, called a *poka-yoke*, that guides the writer for quality.

Key features of the MAXit Checker

- Checks abbreviations in long and short forms for correct capitalization.
- Makes full-sentence grammatical and syntactical analysis.
- Processes text by paragraph, page, table cell or document.
- Suggests verbs that are easier to translate and understand.
- Shows a list of words that are NOT FOUND in the MAXit dictionaries.
- Creates six sigma and readability reports.
- Navigates hypertext links, cross-references and indexes.
- Marks adverbs that do not modify verbs, or can be deleted.
- Marks *nice-to-know* versus *need-to-know* phrases.
- Marks awkward, complex, pretentious and idiomatic English.
- Checks sentence length, procedures 21 words, descriptions 25 words.
- Displays errors in 40 message groups, derived from 19,000 AI rules.
- Validates product terminology, service marks and trademarks.
- Checks text for possible translation problems and suggests alternatives.
- Checks sentences for noun-to-verb agreement and missing references.
- Marks present participles, gerunds (-ing) that cause problems.
- Checks for correct verb negation and double negative statements.
- Ignores text inside selected <tags>, example <comment>, <warning>.
- Validates aerospace Component Maintenance Manuals for S1000D.
- Marks phrases that can cause a risk for product liability (might, fail safe).
- Suggests alternatives for words that have the wrong meaning.
- Matches and marks preferred spelling, including British and American.
- Validates instrument labels for type, style, example, OFF switch.
- Identifies phrasal verbs, for example, lit up, carrying out, opt in.
- Marks wrong suffixes (-ize, -ness) and wrong prefixes (non- and un-).
- Marks and suggests the use of hyphens, for example, 64-bit system.
- Marks apostrophes and possessive nouns for translation.
- Identifies technical jargon, including medicalese and legalese.
- Marks missing references and antecedents, for example, "it," "they."
- Marks missing commas and shows where commas must be inserted.
- Marks all gender pronouns and references, for example, "he" and "she."
- Marks passive voice and suggests active voice for clearer sentences.
- Marks nouns used as verbs that cause comprehension problems.
- Marks noun clusters and phrases to delete without loss of meaning.
- Suggests where to insert articles (a, an, the) to increase readability.
- Shows a list of synonyms with a click-to-insert dialog box.
- Includes a Metric Conversion tool for dual dimensions.
- Includes a Word Finder tool and a Word Counter tool for translators.