



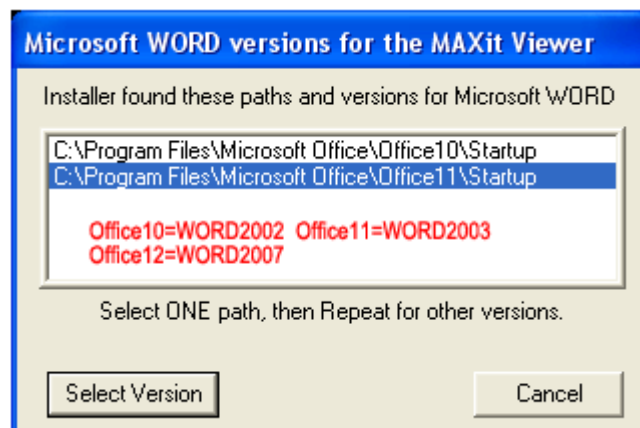
Instructions for the MAXitViewer for WORD

SMART
COMMUNICATIONS, INC.
115 East 57th St., 11th Floor
New York, NY 10022 USA
Tel: +1 (212) 486-1894 (-5 GMT)
Fax: +1 (212) 826-9775
support@smartny.com

How to Install the MAXitViewer for WORD2000/2002/2003/2007

1. Download the **MSVSETUP.EXE** file from <http://www.smartny.com/support.htm>.
2. Click the **MSVSETUP.EXE** icon to start the installer automatically.
3. Select your version of **WORD**. For example, OfficeXP is version 10, see below.
4. Follow the prompts from the **Installer**. The base folder is **C:\Program Files\Maxit**.

You must select a version of **Microsoft Word** so that the **maxview.wll** is loaded into the **Office??\Startup** folder for the version of WORD on your computer. The **MAXitViewer** is an “add-in” and follows the procedures described in Microsoft Help for “*Add-ins and Templates*”.



How to remove the MAXitViewer for WORD:

- a. Go to the **\Startup** folder for **..\Microsoft Office\Office??\Startup** (?? is the version number.)
- b. Remove the file **maxview.wll**.
- c. Go to **C:\Program Files** and remove the complete **\MAXit** folder.

Where to find your test file.

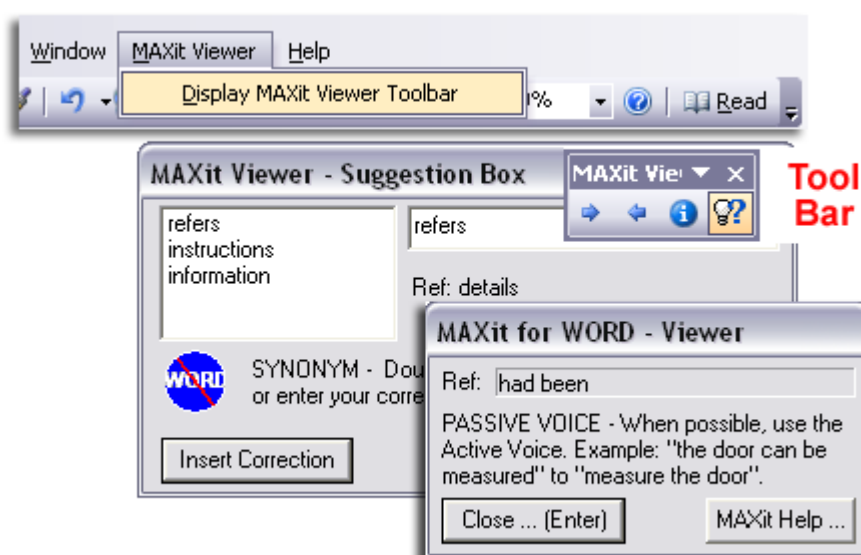
The file you sent to the MAXit team is processed and stored in the folder:
C:\program Files\Maxit\Samples.

The green stripe at the bottom is a list of the errors that are loaded into the **MAXitViewer**. If the green stripe is removed, you will not see any **MAXit** messages.

The text mining sample and the **CE Reference** card are stored in the **\Samples** folder.

(Continued on the next page.)

MAXit Viewer Menu, Dialog Boxes and MAXit ViewerTool bar.



- A. The **MAXitViewer** menu must appear on the main WORD menu bar.
- B. The **MAXitViewer** tool bar is *docked* on the left side of the screen. Drag into the center.
- C. There is a **Synonym Dialog** box and a **Message Dialog** box for the 40 MAXit messages.

How to see the MAXit Messages:

Put your cursor in the center of each colored word, then click the light bulb on the tool bar. Use the right arrow to move to the next message. Click (i) for on-line help.

A note about the MAXit dictionaries:

At this time, the dictionaries for the **MAXit Viewer** are not customized to your products. When the dictionaries are customized, the results are excellent because **MAXit understands** the text. The custom dictionaries are easy to build with the **SMART Text Miner** and maintain with the **SMART Lexicon Manager**.

A note about where to find your test file:

Your test file with the **MAXit Markers** and a green control stripe is in **C:\Program Files\Max-it\Samples**. Do not remove the green stripe which contains the **MAXit** information.

mm (stronger springs **will have to be** installed) Top color is the **MAXit message**.

Do not remove the bottom green stripe.

About the MAXit marks:

There are five colors that highlight the errors and give suggestions. These colors are linked to 9,500+ rules that generate the errors within the **40 MAXit messages**. Each message has a link to on-line Help (i) on the MAXit tool bar for. Use the MAXit tool bar to view each message.

We welcome your questions - Contact maxit@smartny.com.

Thank you - The MAXit Team